

The Secret Lives of Fish

How scientists collect information about fish

2. BRUVs

What is this?

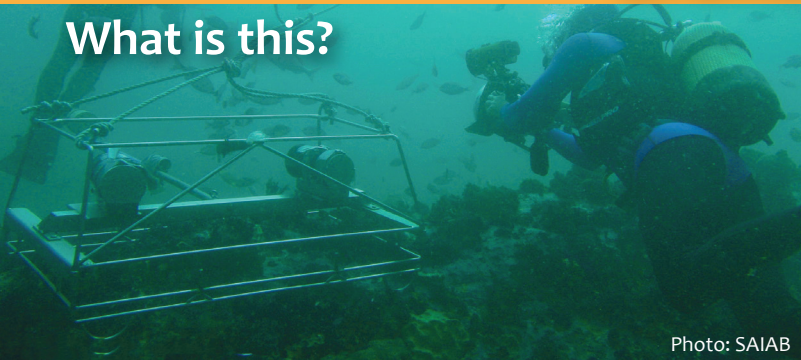


Photo: SAIAB

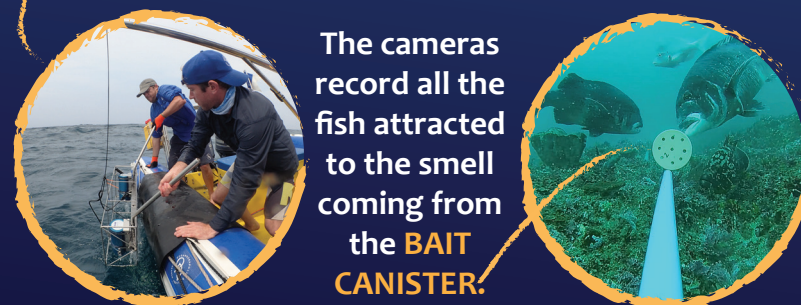
A **B**aited **R**emote **U**nderwater **V**ideo (BRUV) is a new method of studying offshore reef fish. It consists of:



1. A stainless steel frame.
2. Two underwater cameras.
3. A bait canister filled with mashed sardine.

How does it work?

The BRUV system is **LOWERED TO THE SEAFLOOR** on a rope attached to a surface marker-buoy.



The cameras record all the fish attracted to the smell coming from the **BAIT CANISTER**.

After one hour, the system is lifted back to the boat and the video footage is analysed.



How do scientists use it?

BRUVs are used to collect information on **FISH ABUNDANCE, BIOMASS, DIVERSITY** and even **FISH BEHAVIOUR**.

South African scientists are using this technology to **IMPROVE OUR UNDERSTANDING** of fish populations especially in deep water beyond safe diving depths.

How do BRUVs help us to understand MPAs?

ORI scientists have used a **BRUV** system in the Pondoland MPA to **COMPARE FISH POPULATIONS** in fished and no-take protected areas.



Mzamba reef
21m



Mtentu reef
20m



This research has shown that **MORE AND BIGGER FISH** are found in the no-take zone of the MPA.

This helps to prove that MPAs **EFFECTIVELY CONSERVE** our fish populations.



INCORPORATING



Helping people to care for our ocean